



THE
HORSE SHOE FARM

LODGING • DINING • SPA

PROPERTY GUIDE

OVERVIEW OF THSF



WHAT IS

The Horse Shoe Farm?

The Horse Shoe Farm is a boutique resort with an on-property farm-to-table restaurant and a luxury spa.



LODGING • DINING • SPA



THE SILO COOKHOUSE

A FARM TO TABLE DINNER PARTY EXPERIENCE




THE STABLE SPA

A LUXURY SPA IN A REFURBISHED HORSE BARN



LUXURY LODGING

UNIQUE HOMES AVAILABLE FOR ALL OCCASIONS



There is a magic and energy on the land that we witness time and again. It speaks to the hearts of our guests and allows them to unwind, take a breath and connect. It's the greatest gift of the farm and visitors feel the shift upon entering the gates of this luxurious, bucolic oasis. I know that type of guest experience is unparalleled in the region.

JORDAN TURCHIN

STEWARD | THE HORSE SHOE FARM



THE HORSE SHOE FARM

ABOUT

Nestled in the forests of the Blue Ridge Mountains sits The Horse Shoe Farm, an 85-acre riverfront estate, minutes from downtown Hendersonville, Asheville, and Tryon, NC.





Opened in 2018, The Horse Shoe Farm stands today to offer a selection of:

- 8 individual homes & cottages
 - Sleeping up to 61 guests
- The Stable Spa | An unparalleled spa experience in a renovated equestrian stable
- The Silo Cookhouse | A Modern Farm to Table Dinner Party
- Private Events, Retreats & Weddings

THE HORSE SHOE FARM

THE TURCHIN FAMILY

Originally a working farm resurrected in the 1950s, the Turchin Family, who were captivated by its breathtaking beauty and serene elegance, purchased the property and transformed it into an upscale farm retreat with a spiritual twist.

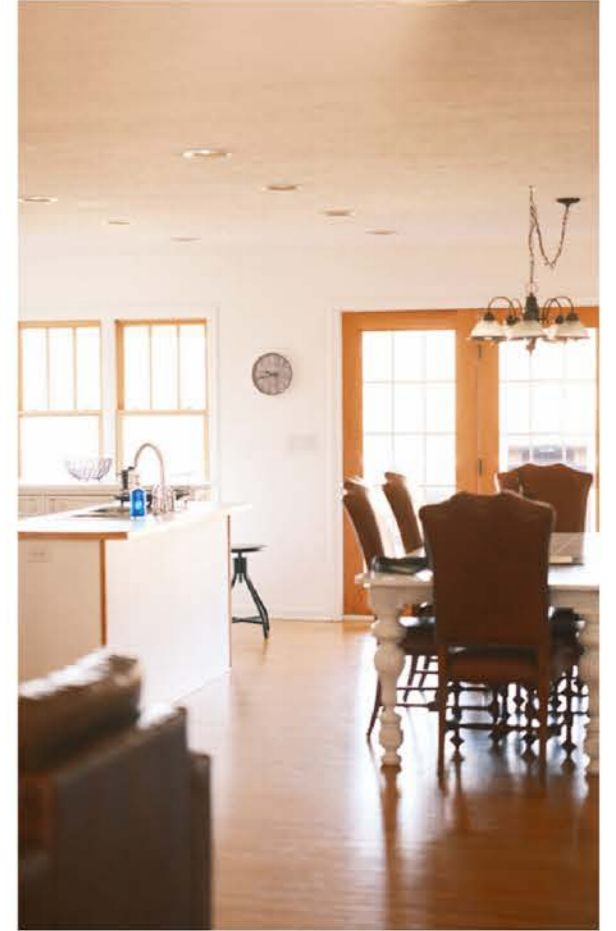
Under the Turchin Companies, The Turchin Family owns and operates The Horse Shoe Farm. A dynamic organization specializing in construction, alternative energies, retail and property management, The Turchin Companies is headed by third generation designer/developer John Turchin.



The Horse Shoe Farm is managed by Jordan Turchin, who maintains & operates the property with his family.

LODGING AMENITIES

With a total of 25 guest rooms and 23.5 baths, The Horse Shoe Farm sleeps up to 61 guests. Rates range from \$350-\$2,350/night for individual homes and start at \$8,500/night for full farm rentals.



HOMES

There are eight luxury vacation homes, cottages and a loft available for booking individually or combined.

LARGER LODGING OPTIONS



The Magnolia Manor

With five-bedrooms, five-baths and 4,800 sq. ft. of living space, this expansive retreat home can sleep up to 14 guests and comfortably hold intimate gatherings. It also comes with a fully equipped kitchen, fireplace, an outdoor fire pit, a hot tub and a porch filled with rocking chairs to enjoy the stunning mountain views.

Rates start at \$2,195 per night

The Stable House

Situated above the Stable Spa, this country-chic, five-bedroom, five-bath barn-house style home sleeps 12 and has aptly been nicknamed the "barndominium." It offers 4,300 sq. ft. of living space, with an open- concept living, kitchen and dining area that spills out into a large elevated deck that overlooks the French Broad River and the Mount Pisgah vista.

Rates start at \$1600 per night

The Willow House

Surrounded by weeping willow trees and a scenic pond, this modern, spacious home offers 3,000 sq. ft. of living space, three-bedrooms, 3.5 baths and can sleep up to ten.

Rates start at \$950 per night

HOME S

COTTAGES

The Field Cottage

This field-side cottage has three bedrooms, three bathrooms, and sleeps up to six.

Rates start at \$700 per night

The Meadow Cottage

This classic farmhouse-style cottage has three bedrooms, two bathrooms, and sleeps up to six.

Rates start at \$600 per night

The Hilltop Cottage

Nestled on top of the hill overlooking the farm, this serene and secluded mountainside retreat home has three bedrooms, two bathrooms, and can sleep up to five.

Rates start at \$435 per night

MID-SIZE LODGING OPTIONS



INTIMATE LODGING



The Lily Cottage

Complete with modern amenities, this romantic country cottage has two bedrooms, two baths and sleeps up to four.

Rates start at \$450 per night

The Farmhouse Loft

This unique one bedroom, one bath loft space sits atop The Farmhouse in the center of it all. The space is ideal for couples, but the queen pull-out sofa in the living room can easily accommodate small families or close friends.

Rates start at \$350 per night

LOFT & COTTAGE

ON SITE ACTIVITIES

- *THE SILO COOKHOUSE & BAR*
- *THE STABLE SPA*
- *THE FARMHOUSE*
- *THE POOL HOUSE*
- *UNIQUE CAR EXPERIENCES*
- *FIREPITS & SMORES*
- *WALKING PATHS*
- *THE ANIMAL BARN*



WWW.THEHORSESHOEFARM.COM



THSF | PROPERTY GUIDE

DINING

THE SILO COOKHOUSE

A MODERN FARM TO TABLE DINNER PARTY

WHERE WE FEED OUR SOUL

GATHER • EAT • DRINK • INDULGE • CONNECT

Featuring indoor/outdoor dining, our lounge, and refurbished grain "Silo Bar", there is no better place to savor friends (old & new) and magnificent sunsets over Mt. Pisgah.

We currently offer a three-course family style dinner party to both guests staying on property and to the residents of the Western North Carolina region. Our menu changes every night in accordance with the natural rhythm of mother earth and her freshest seasonal bounty.

WWW.THESILOCOOKHOUSE.COM



SPRING FEATURED DISHES

BURRATA

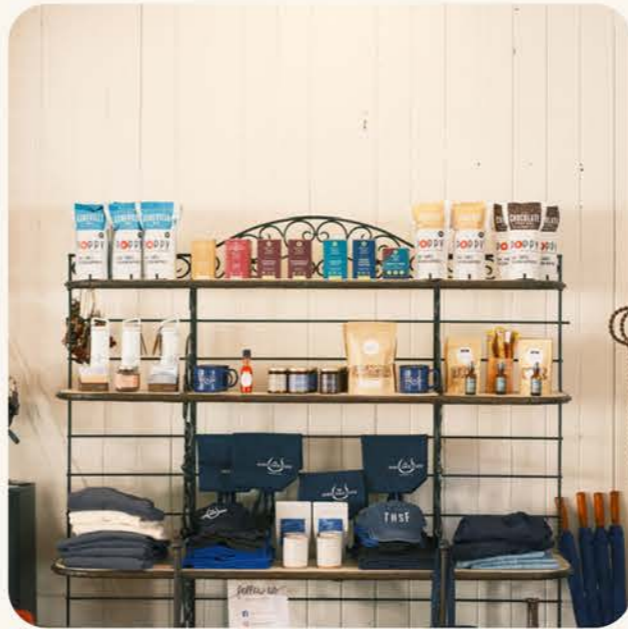
asparagus, morel mushrooms,
minus 8 vinegar, pistachio

RAVIOLO

braised lamb, spring pea,
raddish, mint, black pepper

STRAWBERRY & RHUBARB CHARLOTTE ROYALE

vanilla bean bavarian, almond
brittle, strawberry gel





THE STABLE SPA

The Stable Spa is housed in a soulful yet stylish converted barn, which promises to bring an unparalleled wellness experience to match its peaceful, natural setting. Inspired by the elements of the surrounding Blue Ridge Mountains, the menu offers a selection of treatments with the intention to nourish and heal the body, mind and spirit. Going beyond the typical treatments, The Stable Spa offers immersive experiences such as vibration healing sessions, inner guidance sessions and sound baths that will leave guests soul-connected and grounded in serenity.

FEATURED TREATMENT

BELLANINA WITH FULL BODY MASSAGE TREATMENT - 120 MINUTES

For total relaxation, this treatment uses a combination of aromatherapy and organic oils to soothe and deeply relax the body. After using a variety of stress relieving facial massage techniques, this deeply relaxing treatment is followed by a full body massage that will leave you completely stress free. All products used are organic and aromatherapy based.

WWW.THESTABLESPA.COM



MEETING & EVENT SPACES

The Sunset Barn & Sanctuary are the perfect place to hold your meetings while on site.

ACCOMODATES 10-100 PEOPLE

FEATURES:

- 600-6,000sq/ft of flexible space
- Climate controlled
- Excellent WiFi
- AV/projector/screen (add-on)
- Multiple meeting configurations for each space





THSF | PROPERTY GUIDE

ACTIVITIES

THE FARMHOUSE

FUN AT YOUR FINGERTIPS

The Farmhouse is the central hub of The Horse Shoe Farm. It serves as a communal living space, game room and place to enjoy, socialize and meet your neighbors. Play basketball, ping-pong, corn hole, and board games, enjoy a puzzle, take the mountain bikes out for a ride or express your inner artist with our array of arts and crafts.

WWW.THEHORSESHOEFARM.COM





THSF | PROPERTY GUIDE

ACTIVITIES

THE POOL HOUSE

WHEN I DIP • YOU DIP • WE DIP

Journey out into the fields to discover one of the most serene spaces on the property, The Pool House. This artfully designed aquatic oasis has a breathtaking front row view of the Mount Pisgah vista.

The Pool House is home to the pool, hot tub, sauna and steam room, and is a popular outpost for The Stable Spa. Adjacent to The Pool House are the soccer fields and Animal Barn, making this corner of the property one of the most interactive for all types of guests.

WWW.THEHORSESHOEFARM.COM



ACTIVITIES

FARM AMENITIES

- BALL FIELDS
- BIKE PATHS
- BONFIRE & S'MORES
- DOG FRIENDLY
- EVENT CENTER
- FARM ANIMALS
- FISHING IN 2 PONDS
- FRENCH BROAD RIVER WALK
- GAMEROOM
- GIFT SHOP
- LABYRINTH
- ON-SITE DINING
- ORGANIC GARDEN & FARM
- PICKLEBALL COURT
- SPA TREATMENTS
- YOGA & MEDITATION
- WALKING TRAILS





LOCAL SIGHTS & SEES

- The Biltmore Estate - Asheville
- DuPont and Pisgah Forest - Between Asheville & Hendersonville
- The Blue Ridge Parkway & Mt. Pisgah
- Downtown Hendersonville, Asheville, and Brevard
- Ample Winery and Breweries
- Malaprops Bookstore (one of the oldest in the country)
- Grove Arcade - Downtown Asheville Shops
- Tryon Equestrian Center
- The Flat Rock Playhouse - State Theatre of NC

GET IN TOUCH

CONTACT:

info@thehorseshoefarm.com
828-393-3034

LOCATION:

155 Horse Shoe Farm Dr.
Hendersonville, NC 28791

WWW.THEHORSESHOEFARM.COM
[@THEHORSESHOEFARM](https://www.instagram.com/THEHORSESHOEFARM)



LODGING • DINING • SPA



AIRPORTS & GETTING TO THE FARM

The Horse Shoe Farm is situated in the Blue Ridge Mountains on the French Broad River in Hendersonville, North Carolina.

It is conveniently located 10 miles from Asheville Regional Airport, which has direct flights from many major U.S. Cities.